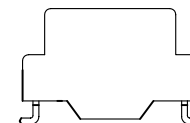
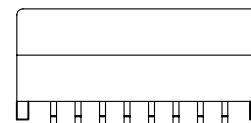
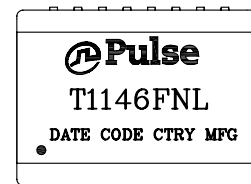


NOTES:

1. ROHS COMPLIANT
2. HEADER: DAP (DIALLYL PHTHALATE) WITH FLAMMABILITY RATING UL 94V-0 OR BETTER.
3. STORAGE TEMPERATURE: -20°C TO +125°C
4. COMPLIANCE TO J-STD:
 - A. J-STD-002: SOLDERABILITY AT 245°C REFLOW PROFILE
 - B. J-STD-020: LEVEL 1, NO MOISTURE SENSITIVE
 - C. J-STD-075: R7, 245°C MAXIMUM THROUGH REFLOW SOLDER
5. TO ORDER TAPE & REEL PACKAGING ADD A "T" SUFFIX TO THE PART NUMBER(i.e T1146FNL BECOMES T1146FNLT).

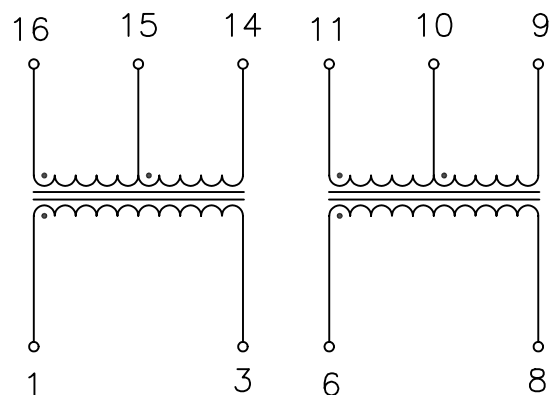


FINAL OUTLINE

© Copyright, 2014. Pulse Electronics Corp. All rights reserved. Pulse confidential & proprietary. (06/12/14)

| PRODUCT DESCRIPTION | TLA DRAWING | PS DRAWING | SHEET | PART NO. | DATASHEET REV. |
|-----------------------------------|-------------|---------------|--------|----------|----------------|
| XFMR,DUAL,T1,BH,ET,1:2/2.4,1:1,OH | T1146FNL-11 | PS-2005.002-D | 1 OF 3 | T1146FNL | A |

ELECTRICAL CHARACTERISTICS AT +25°C UNLESS OTHER SPECIFIED



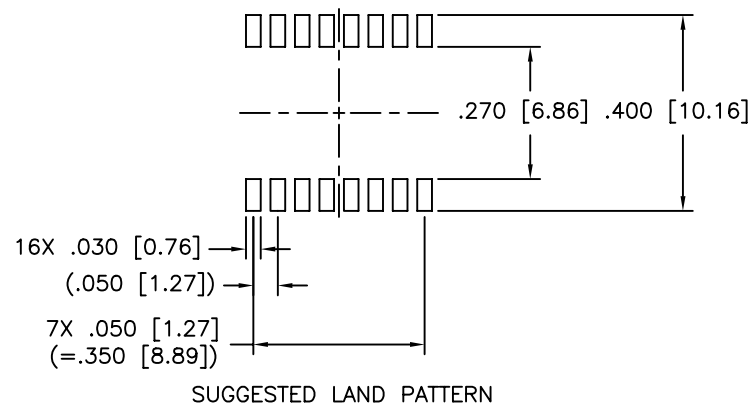
SCHEMATIC

| PARAMETER | SPECIFICATIONS |
|--|---|
| OPERATING TEMPERATURE | 0°C – 70 °C |
| POLARITY | PER SCHEMATIC |
| TURNS RATIO @ 10KHz, 0.02VRMS | $\frac{(16-15)}{(15-14)} = 5.0 \pm 2\%$ $\frac{(16-15)}{(1-3)} = 2.0 \pm 2\%$ $\frac{(15-14)}{(1-3)} = 0.4 \pm 2\%$ $\frac{(11-9)}{(6-8)} = 1.0 \pm 2\%$, $\frac{(11-10)}{(6-8)} = 0.793 \begin{matrix} +1.75\% \\ -2.2\% \end{matrix}$ |
| OPEN CIRCUIT INDUCTANCE (OCL): @ 100KHz, 0.02VRMS | (1-3) = (6-8) = 1.0mH MINIMUM |
| LEAKAGE INDUCTANCE(LL) @ 100KHz, 0.02VRMS | (1-3) WITH (16-14) SHORT = 1.0 uH MAXIMUM (6-8) WITH (11-9) SHORT = 1.0 uH MAXIMUM |
| CWW(PRI TO SEC) @ 100KHz, 1 VRMS | (16-14) TO (1-3) = 35 pF MAXIMUM (6-8) TO (11-9) = 35 pF MAXIMUM |
| DC RESISTANCE (DCR) | (1-3) = 1.0 OHM MAXIMUM (6-8) = 1.0 OHM MAXIMUM |
| HIPOT (PRI TO SEC) | 1500 VRMS MIN @ 60 SECONDS |

NOTE: f IS FREQUENCY IN MHz.

© Copyright, 2014. Pulse Electronics Corp. All rights reserved. Pulse confidential & proprietary. (06/12/14)

| PRODUCT DESCRIPTION | TLA DRAWING | PS DRAWING | SHEET | PART NO. | DATASHEET REV. |
|-----------------------------------|-------------|---------------|--------|----------|----------------|
| XFMR,DUAL,T1,BH,ET,1:2/2.4,1:1,OH | T1146FNL-11 | PS-2005.002-D | 2 OF 3 | T1146FNL | A |



DIMENSIONS ARE IN INCHES [MILLIMETERS] WITH THE FOLLOWING TOLERANCES: [MILLIMETERS] ARE FOR REFERENCE ONLY.
 .XX= ±.01 [±0.25]
 .XXX= ±.005 [±0.13]

© Copyright, 2014. Pulse Electronics Corp. All rights reserved. Pulse confidential & proprietary. (06/12/14)

| PRODUCT DESCRIPTION | TLA DRAWING | PS DRAWING | SHEET | PART NO. | DATASHEET REV. |
|-----------------------------------|-------------|---------------|--------|----------|----------------|
| XFMR,DUAL,T1,BH,ET,1:2/2.4,1:1,OH | T1146FNL-11 | PS-2005.002-D | 3 OF 3 | T1146FNL | A |