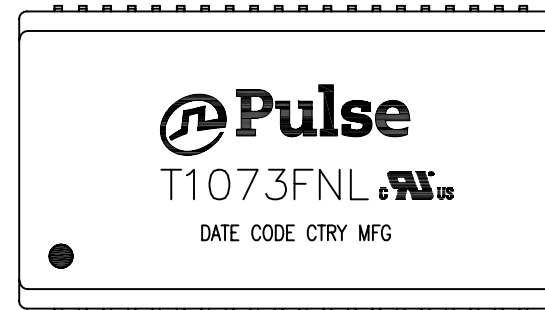


NOTES:

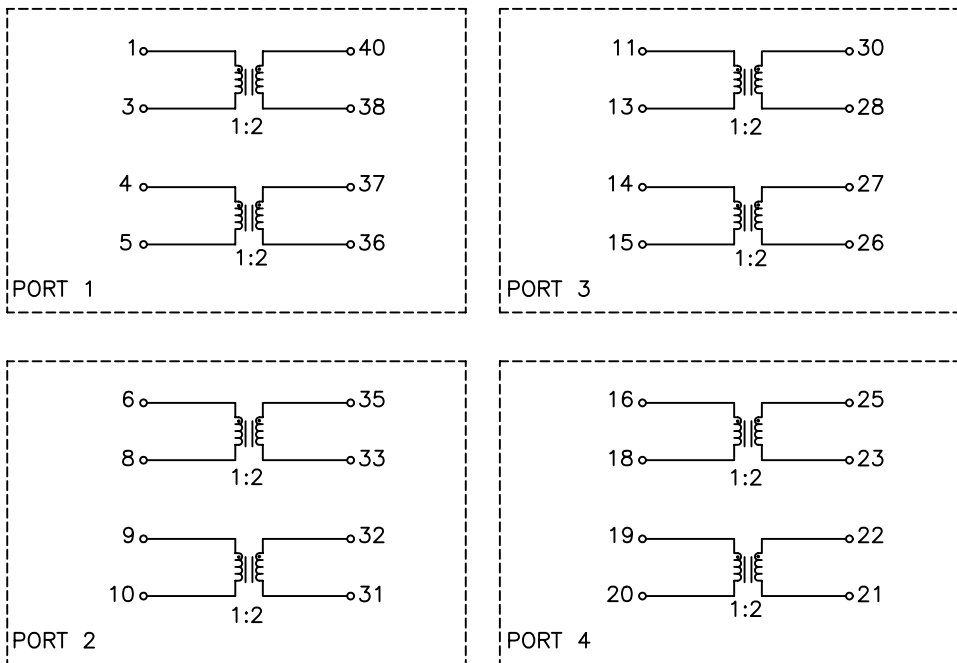
1. ROHS COMPLIANT
2. HEADER: PHENOLIC WITH FLAMMABILITY RATING UL 94V-0 OR BETTER.
3. STORAGE TEMPERATURE: -20°C TO +125°C
4. COMPLIANCE TO J-STD:
 - A. J-STD-002: SOLDERABILITY AT 245°C REFLOW PROFILE
 - B. J-STD-020: LEVEL 1, NO MOISTURE SENSITIVE
 - C. J-STD-075: R7, 245°C MAXIMUM THROUGH REFLOW SOLDER
5. TO ORDER TAPE & REEL PACKAGING ADD A "T" SUFFIX TO THE PART NUMBER(i.e T1073FNL BECOMES T1073FNLT).



FINAL OUTLINE

© Copyright, 2014. Pulse Electronics Corp. All rights reserved. Pulse confidential & proprietary. (06/17/14)

PRODUCT DESCRIPTION	TLA DRAWING	PS DRAWING	SHEET	PART NO.	DATASHEET REV.
XFMR,OCTAL,T1,TOU,ET,1:2 OH	T1073FNL-10	PS-2743.001-A	1 OF 3	T1073FNL	A



SCHEMATIC

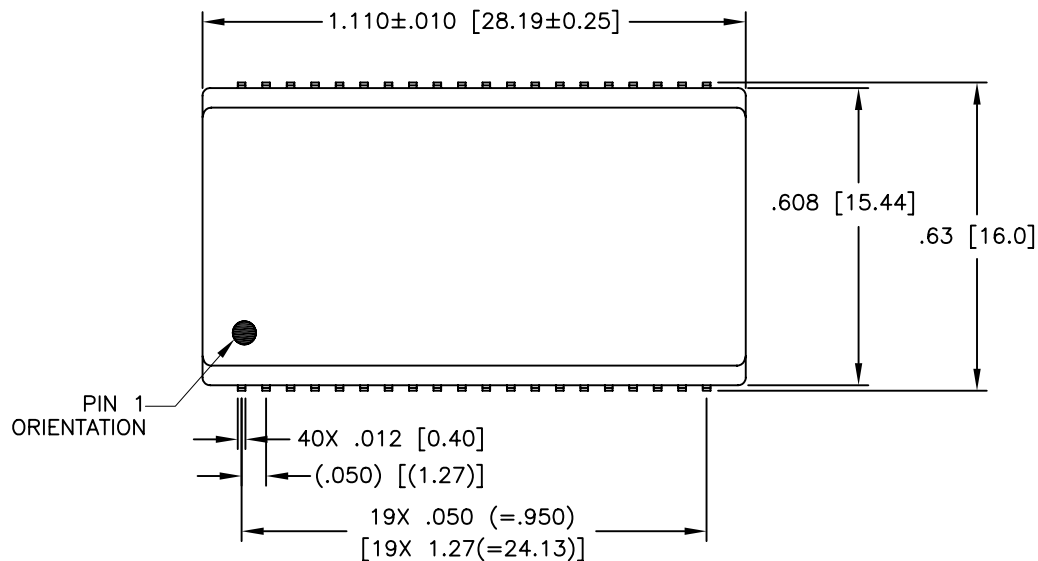
ELECTRICAL CHARACTERISTICS AT +25°C UNLESS OTHER SPECIFIED
(PORT 1)

PARAMETER	SPECIFICATIONS
OPERATING TEMPERATURE	0°C – 70°C
POLARITY	PER SCHEMATIC
URNS RATIO: PRI:SEC @100 KHz, 0.2 VRMS	2:1 ±2%
OPEN CIRCUIT INDUCTANCE @10 KHz, 0.1 VRMS	(40–38)=(37–36)=1.2 mH MIN
LEAKAGE INDUCTANCE (LL): @100 KHz, 0.01 OR 0.02 VRMS	0.3 uH MAXIMUM
C _{ww} @ 100 KHz, 0.01 VRMS	35 pF MAX
DCR (Pri & Sec)	(1–3)=(4–5)= 0.7 OHMS MAX (40–38)=(37–36)= 1.2 OHMS MAX
HIPOT (PRI TO SEC)	1500 VRMS, 60 S
OPEN/SHORT TEST	10 MOHM MIN

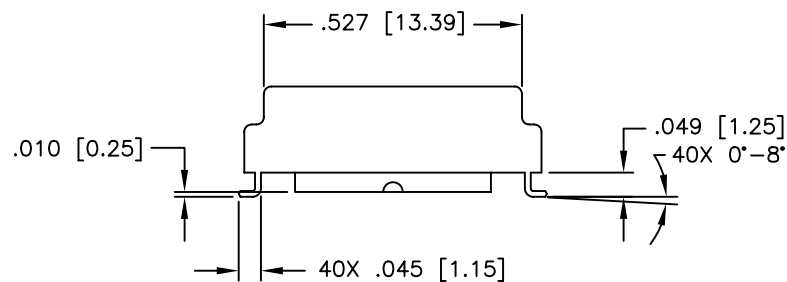
NOTE: PORT 2, 3 AND 4 HAS THE SAME ELECTRICAL CHARACTERISTICS AS PORT 1.

© Copyright, 2014. Pulse Electronics Corp. All rights reserved. Pulse confidential & proprietary. (06/17/14)

PRODUCT DESCRIPTION	TLA DRAWING	PS DRAWING	SHEET	PART NO.	DATASHEET REV.
XFMR,OCTAL,T1,TOU,ET,1:2 OH	T1073FNL-10	PS-2743.001-A	2 OF 3	T1073FNL	A



SUGGESTED PAD LAYOUT



DIMENSIONS ARE IN INCHES [MILLIMETERS] WITH THE FOLLOWING TOLERANCES: [MILLIMETERS] ARE FOR REFERENCE ONLY.
 .XX= ±.01 [±0.25]
 .XXX= ±.005 [±0.13]

© Copyright, 2014. Pulse Electronics Corp. All rights reserved. Pulse confidential & proprietary. (06/17/14)

PRODUCT DESCRIPTION	TLA DRAWING	PS DRAWING	SHEET	PART NO.	DATASHEET REV.
XFMR,OCTAL,T1,TOU,ET,1:2 OH	T1073FNL-10	PS-2743.001-A	3 OF 3	T1073FNL	A