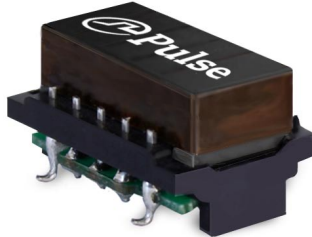
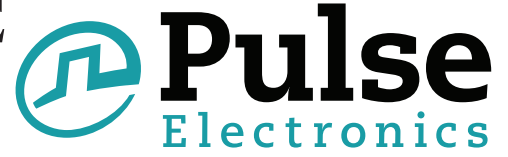


XDSL SPLITTER FILTER MODULE

SmartER Series



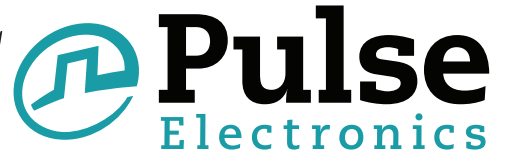
- POTS CO splitter for standard ADSL /VDSL2 applications
- LPF compliant with ETSI complex impedance ($Z_L = 270 \Omega + 750 \Omega/150 \text{ nF}$), and option A of ETSI specification TS 101-952-1 v1.1.1, and with the optional requirement, relative to metering pulse at 12 kHz (Clause 6.7)
- Part of a standard series which has footprint compatibility
- For ADSL, ADSL2+, VDSL and VDSL2 applications
- Compliant with Broadband Forum TR-127 standard for VDSL2 applications
- Patented technology US7598837, US7598839, CN1667763, EP1644943, TWI316724, CA2531599

Electrical Specifications @ 25°C

PARAMETER	FREQUENCY	
POTS Impedance	100 Hz to 4 kHz	$270 \Omega + 750 \Omega / 150 \text{ nF}$
POTS Insertion Loss	1 kHz	1 dB MAX
POTS Insertion Loss Distortion relative to 1 kHz	200 Hz to 4 kHz	1 dB MAX
POTS Return Loss	200 Hz to 3.4 kHz 3.4k Hz to 4 kHz	12 dB MIN 8 dB MIN
POTS Group Delay	200 Hz to 4 kHz	200 μs MAX
Longitudinal Balance	50 Hz to 600 Hz 600 Hz to 3.4 kHz 3.4 kHz to 4 kHz	40 dB MIN 46 dB MIN 40 dB MIN
xDSL Insertion Loss	32 kHz to 30 MHz	55 dB MIN
DC Current		80 mA MAX
Metering Pulse	12kHz	3 dB MAX
Total DC Resistance		50 Ω MAX

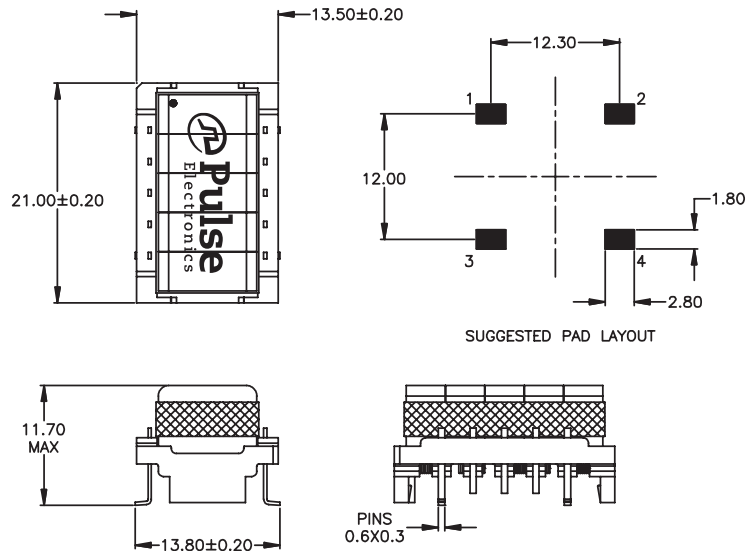
XDSL SPLITTER FILTER MODULE

SmartER Series



Mechanical

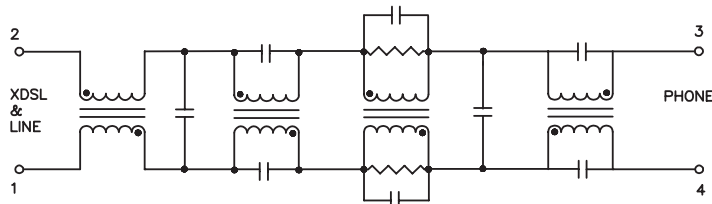
B89S59NL



Weight 5 grams
 Tray 80/tray
 Dimensions: mm
 Unless otherwise specified, all tolerances are ± 0.25

Schematic

B89S59NL



For More Information:

Pulse North American Headquarters

12220 World Trade Dr.
 San Diego, CA 92128
 U.S.A.

TEL: 858 674 8100
 FAX: 858 674 8262

Pulse European Headquarters

Einsteinstrasse 1
 D-71083 Herrenberg
 Germany

TEL: 49 7032 7806 0
 FAX: 49 7032 7806 12

Pulse China Headquarters

B402, Shenzhen Academy of
 Aerospace Technology Bldg.
 10th Kejinan Rd.
 High-Tech Zone
 Nanshan District
 Shenzhen, PR China 518057

TEL: 86 755 33966678
 FAX: 86 755 33966700

Pulse North China

Room 1503
 XinYin Building
 No. 888 YiShan Rd.
 Shanghai 200233
 China

TEL: 86 21 32181071
 FAX: 86 21 32181396

Pulse South Asia

150 Kampong Ampat
 #07-01/02
 KA Centre
 Singapore 368324

TEL: 65 6287 8998
 FAX: 65 6280 0080

Pulse North Asia

No. 26
 Kao Ching Rd.
 Yang Mei Chen
 Taoyuan Hsien
 Taiwan, R. O. C.
 32667

TEL: 886 3 4643715
 FAX: 886 3 4641911

Performance warranty of products offered on this data sheet is limited to the parameters specified. Data is subject to change without notice. Other brand and product names mentioned herein may be trademarks or registered trademarks of their respective owners. Pulse and the Squarewave logo are trademarks of Pulse Electronics Corporation, registered in the U.S. and other countries. © Copyright, 2011. Pulse Electronics Corporation. All rights reserved.